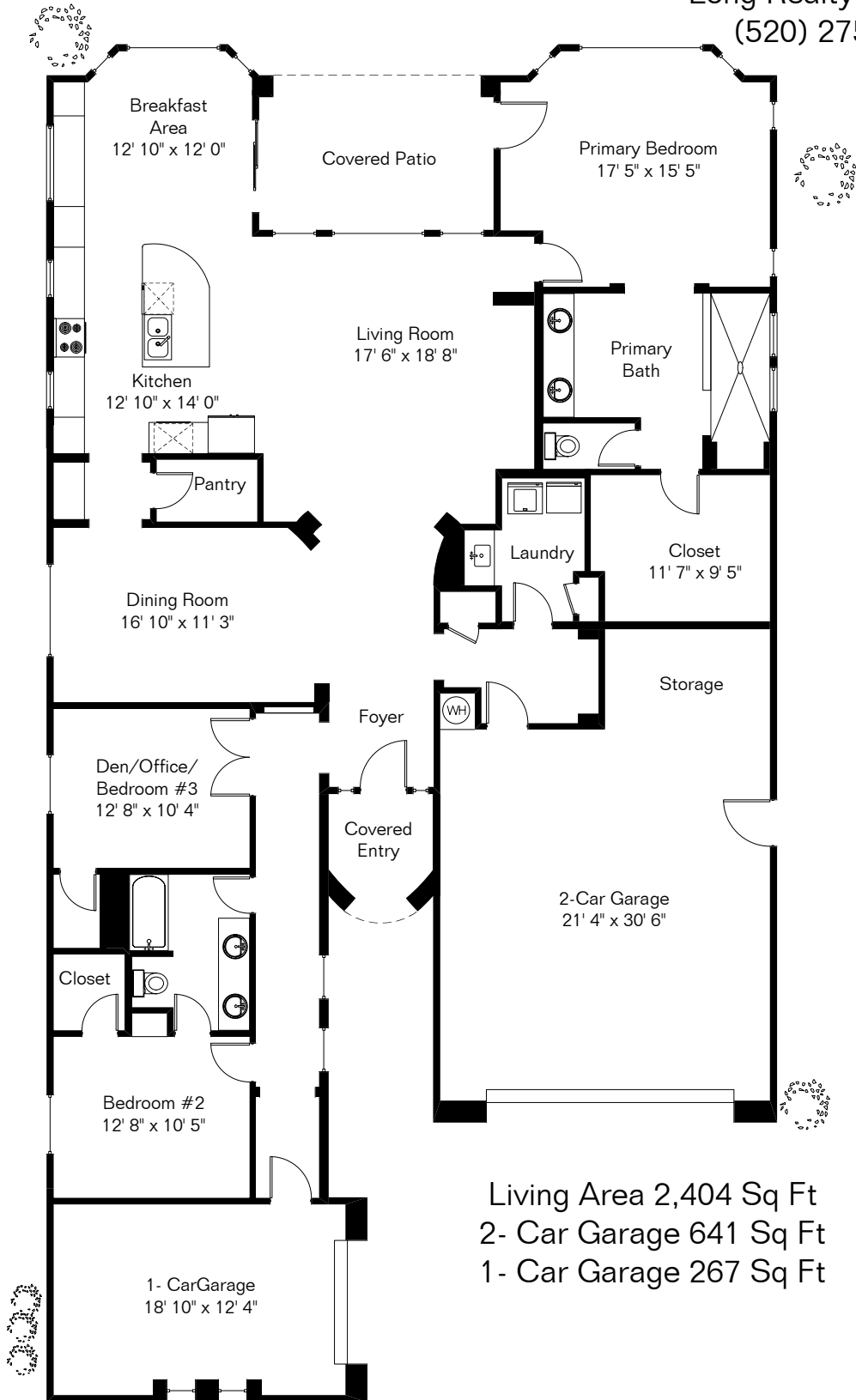


The square footages and room size information are deemed to be reliable but are not guaranteed and should be independently verified. This drawing is for marketing purposes only.

7886 W Sage Path

Presented by Pam Treece
 Long Realty Company
 (520) 275-2664

Pool Area



Living Area 2,404 Sq Ft
 2- Car Garage 641 Sq Ft
 1- Car Garage 267 Sq Ft

Site Visit February 2023

0 ft. 6 ft. 10 ft. 20 ft.



Copyright 2023 Floor Plans First! LLC
 All Rights Reserved.

Floor Plans First!
 See the Floor Plan First!

FloorPlansFirst.com
 (520) 881-1500